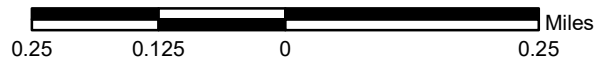



River Run

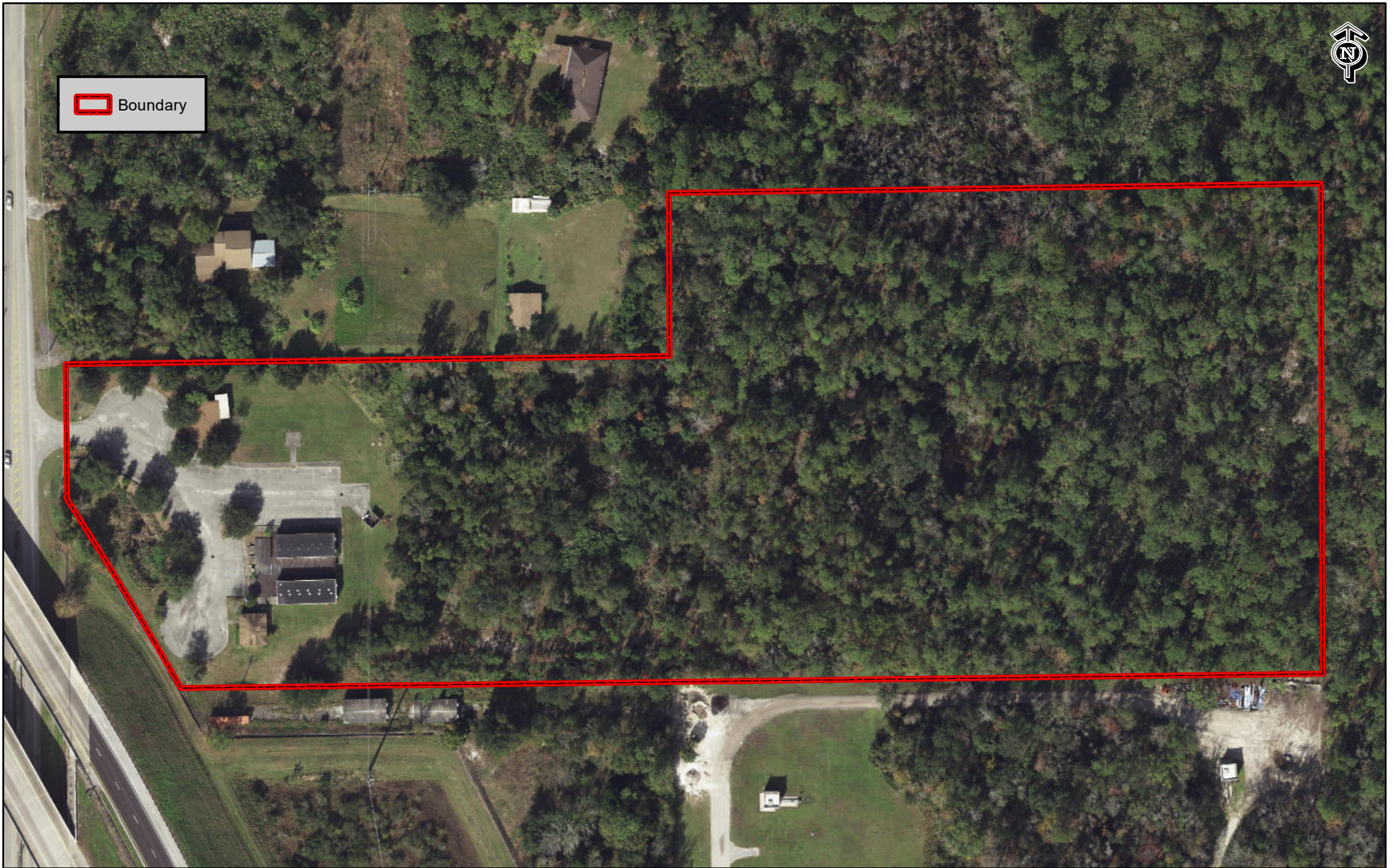
Figure 1 - Location Map
 Section 30, Township 22S Range 31E
 Orange County, Florida



MODICA & ASSOCIATES
 302 Mohawk Road
 Clermont, Florida 34715
 P: (352) 394-2000
 F: (352) 394-1159
 Email: Environmental@Modica.cc
www.ModicaAndAssociates.com

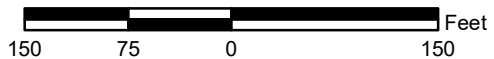


 Boundary





River Run

Figure 2 - Aerial Photograph
Section 30, Township 22S Range 31E
Orange County, Florida



MODICA & ASSOCIATES
302 Mohawk Road
Clermont, Florida 34715
P: (352) 394-2000
F: (352) 394-1159
Email: Environmental@Modica.cc
www.ModicaAndAssociates.com

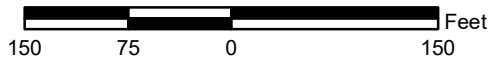


-  Boundary
-  20-Immokalee Fine Sand
-  3-Basinger Fine Sand - Depressional
-  34-Pomello Fine Sand - 0 to 5 Percent Slopes
-  42-Sanibel Muck
-  44-Smyrna Fine Sand




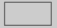



River Run

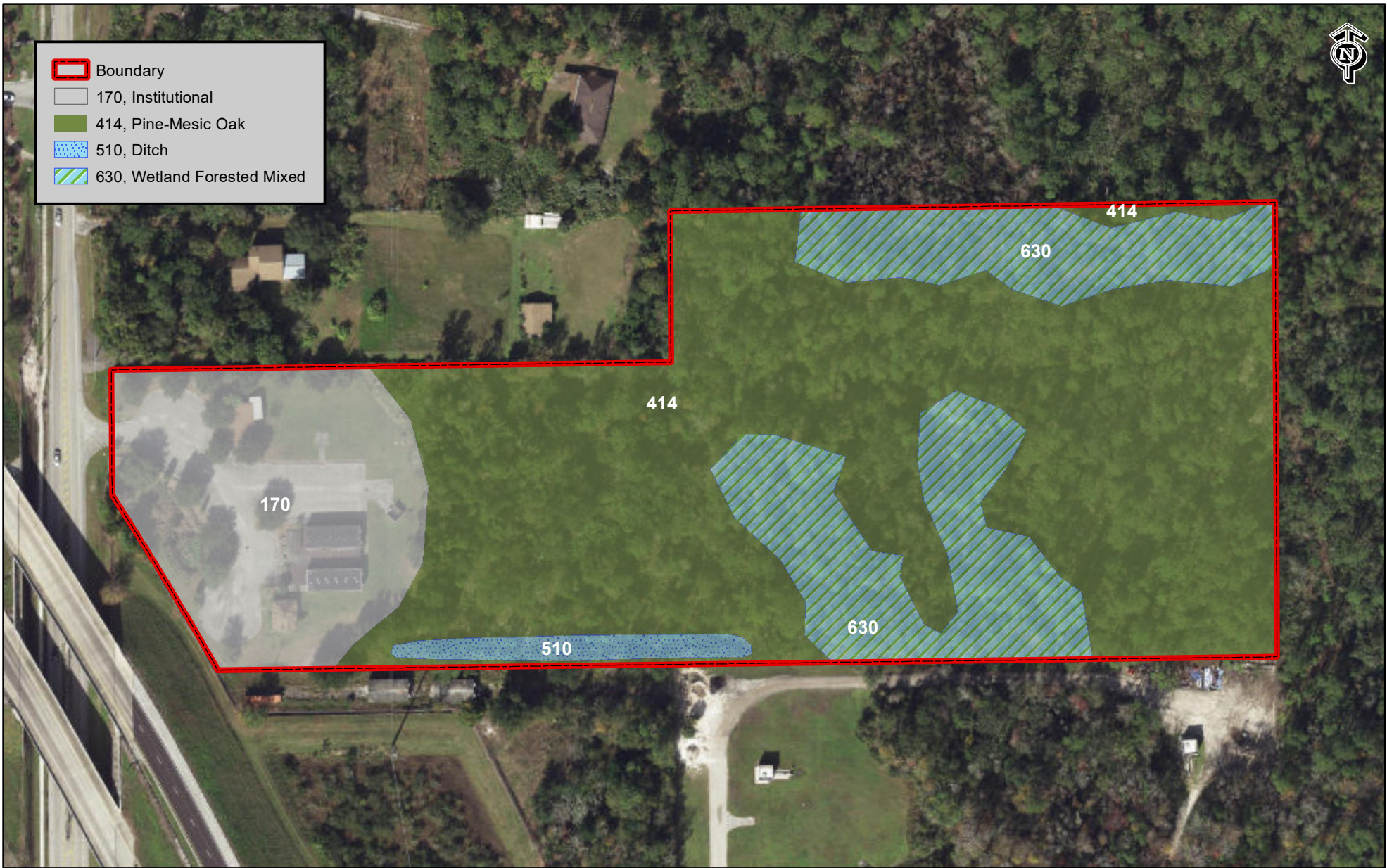
Figure 3 - Soils Map
Section 30, Township 22S Range 31E
Orange County, Florida



MODICA & ASSOCIATES
302 Mohawk Road
Clermont, Florida 34715
P: (352) 394-2000
F: (352) 394-1159
Email: Environmental@Modica.cc
www.ModicaAndAssociates.com

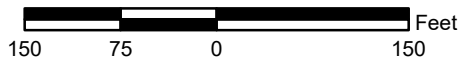


-  Boundary
-  170, Institutional
-  414, Pine-Mesic Oak
-  510, Ditch
-  630, Wetland Forested Mixed



River Run

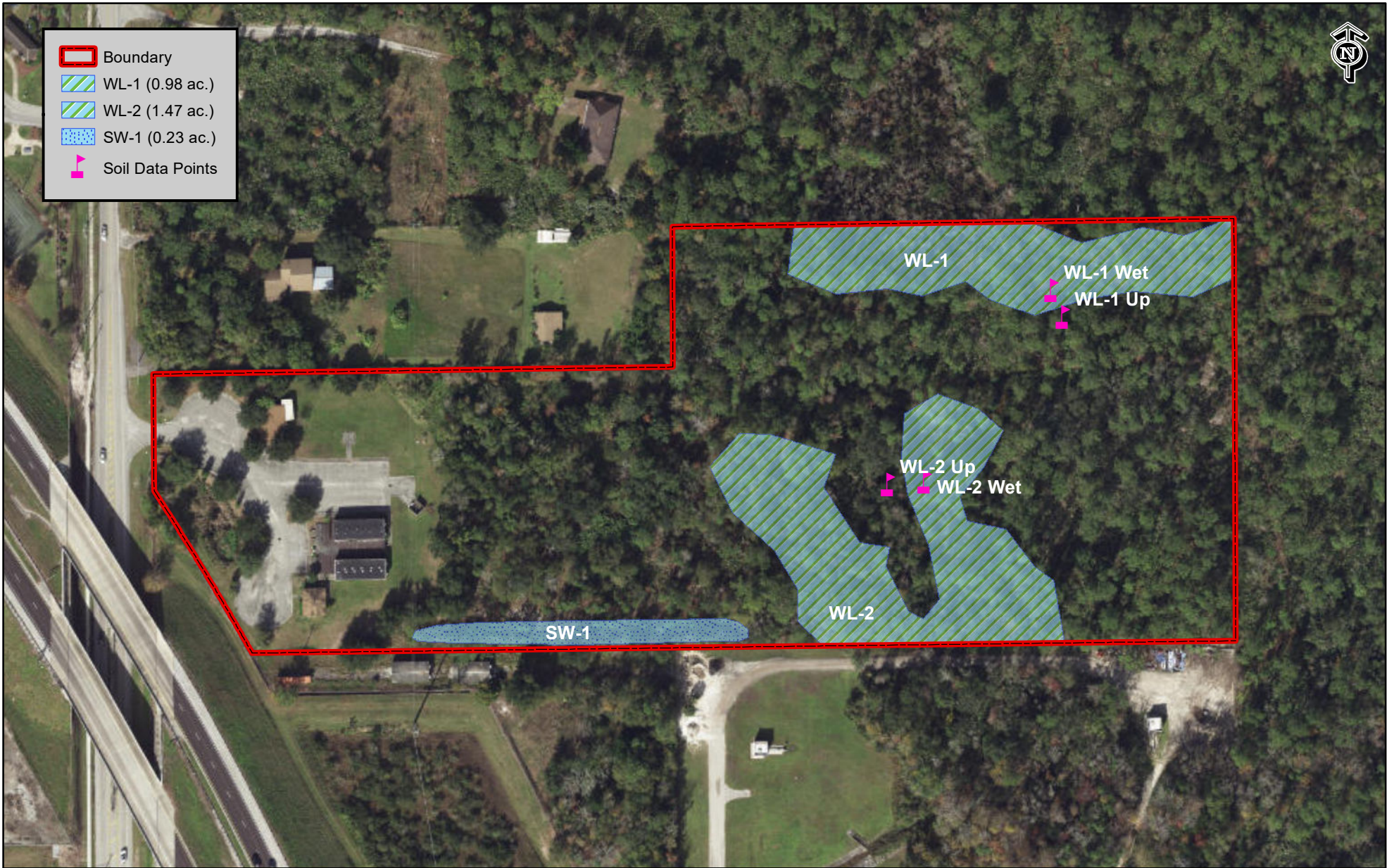
Figure 4 - Land Use Map
Section 30, Township 22S Range 31E
Orange County, Florida



MODICA & ASSOCIATES
302 Mohawk Road
Clermont, Florida 34715
P: (352) 394-2000
F: (352) 394-1159
Email: Environmental@Modica.cc
www.ModicaAndAssociates.com

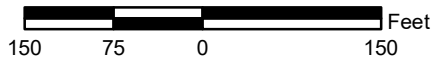


- Boundary
- WL-1 (0.98 ac.)
- WL-2 (1.47 ac.)
- SW-1 (0.23 ac.)
- Soil Data Points




River Run


Figure 5 - Wetland & Surface Water Map
Section 30, Township 22S Range 31E
Orange County, Florida

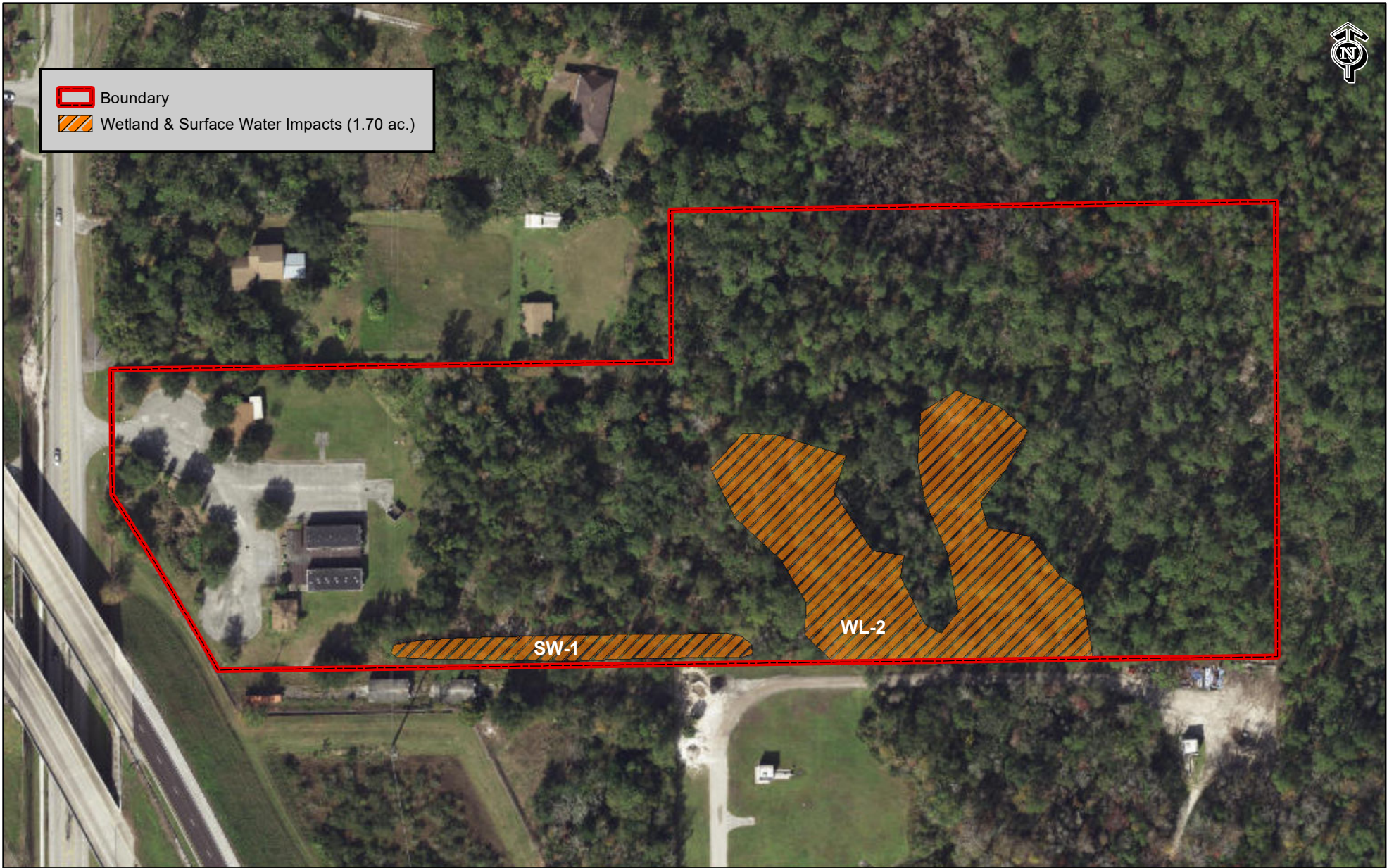


MODICA & ASSOCIATES
302 Mohawk Road
Clermont, Florida 34715
P: (352) 394-2000
F: (352) 394-1159
Email: Environmental@Modica.cc
www.ModicaAndAssociates.com



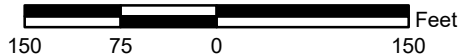
 Boundary

 Wetland & Surface Water Impacts (1.70 ac.)



River Run

Figure 6 - Wetland & Surface Water Impact Map
Section 30, Township 22S Range 31E
Orange County, Florida



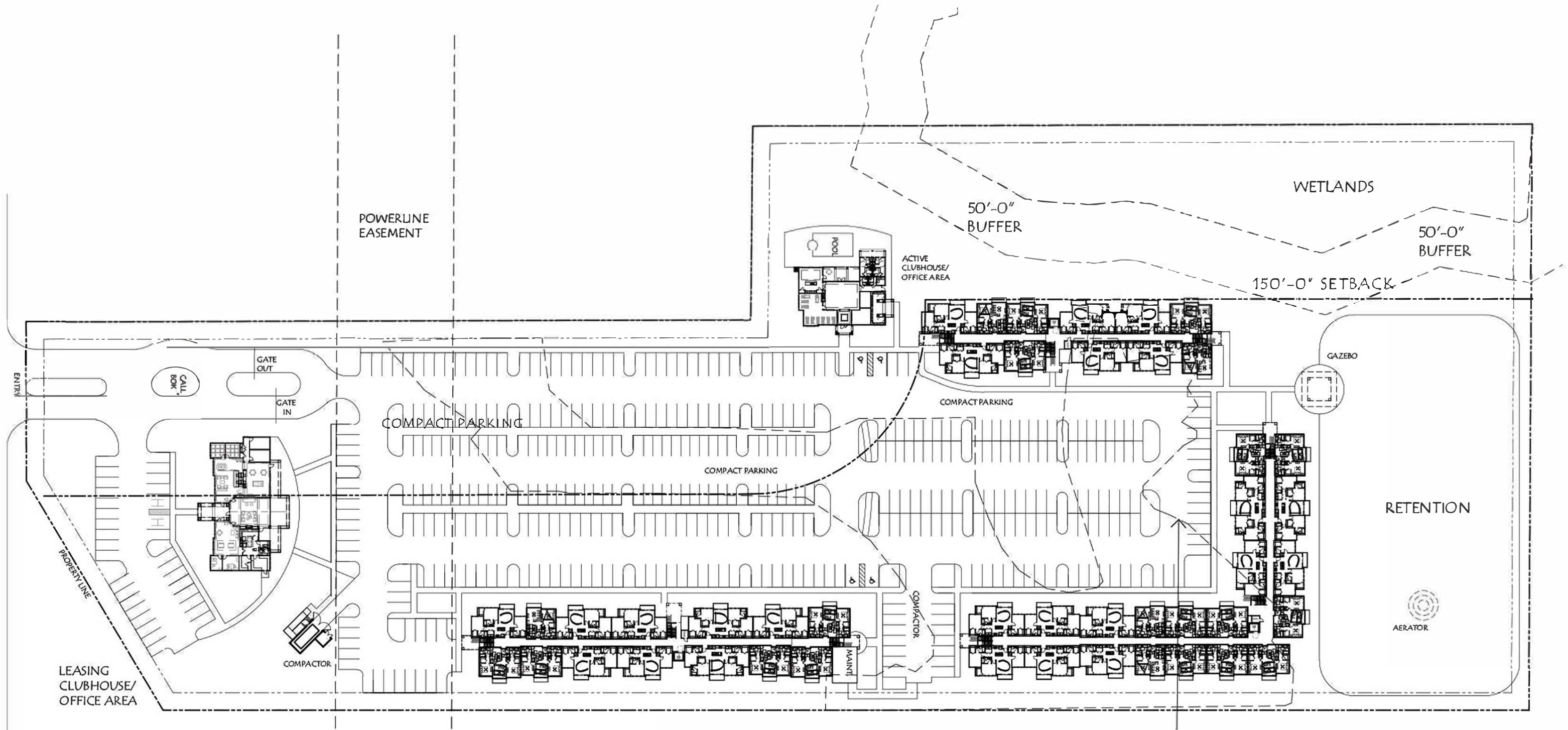
MODICA & ASSOCIATES
302 Mohawk Road
Clermont, Florida 34715

P: (352) 394-2000

F: (352) 394-1159

Email: Environmental@Modica.cc

www.ModicaAndAssociates.com



- 1st - 3rd
- 20 - 'A' (1 bedrm) Units
- 64 - 'B' (2 bedrm) Unit
- 76 - 'C' (3 bedrm) Unit
- 20 - 'D' (4 bedrm) Units

180 TOTAL UNITS
 456 BEDS (1 PARKING SP. PER BED)= 456 PARKING SP. REQ.

142 - 9' X 18' COMPACT PARKING (25%)
 318 - 9' X 20' PARKING SPACES
 460 TOTAL PARKING SPACES

CONCEPTUAL SITE PLAN
RIVER RUN APARTMENTS
 16-051 3 13 17

